

ODYSSEY



**DESIGN + PERFORMANCE™**

Strong and authentic,  
the Sunbrella® collections  
take you to new fabric horizons.

The beauty in simplicity  
characterizes the Odyssey Collection.  
This timeless collection is a balance  
between essential and functional.





---

ARCH R052 140  
ARCHI CONCRETE



---

NAT 10101 140  
**NATTÉ** TONKA

NAT 10235 140  
**NATTÉ** AMBER

# ODYSSEY

The beauty in simplicity  
characterizes the Odyssey Collection.



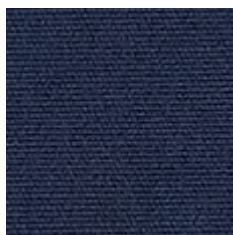
---

CHA2 J193 140  
**CHARTRES PEARL**

SAV2 J233 140  
**SAVANE COCONUT**

SJA 18021 00 137  
**HERITAGE RUST**

# SOLIDS & STRIPES



SJA 3991 137  
**BLAZER**

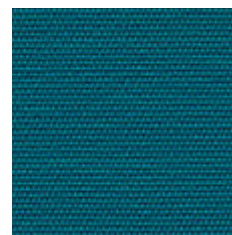
**NEW**



SJA 5499 137  
**TRUE BLUE**



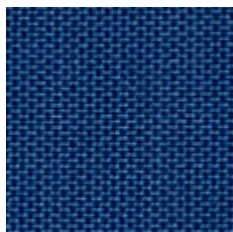
SJA 5416 137  
**ARUBA**



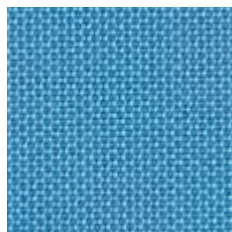
SJA 3944 137  
**CHARRON**



SJA 3738 137  
**MACAO**



SJA 3717 137  
**RIVIERA BLUE**

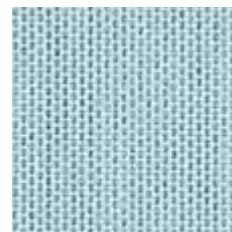


SJA 3990 137  
**MYOSOTIS**

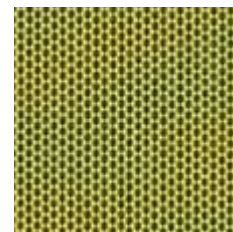
**NEW**



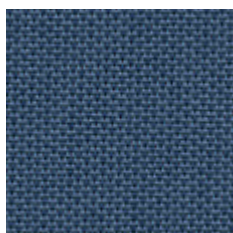
SJA 3793 137  
**MINERAL BLUE CHINÉ**



SJA 3964 137  
**CURAÇAO**



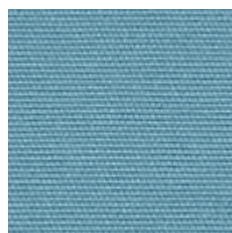
SJA 3970 137  
**LICHEN**



SJA 3942 137  
**BLUE STORM**



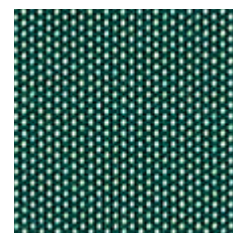
SJA 3941 137  
**ADRIATIC**



SJA 5420 137  
**MINERAL BLUE**



SJA 3967 137  
**MINT**



SJA 3987 137  
**ALPINE**

**NEW**



SJA 3778 137  
**QUADRI GREY**

REPEAT:  $\longleftrightarrow$  22,71 cm



SJA 3776 137  
**PORTO BLUE CHINÉ**

REPEAT:  $\longleftrightarrow$  19,95 cm

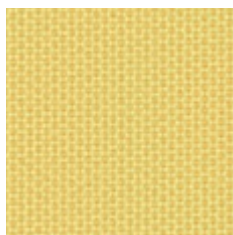


SJA 3777 137  
**PORTO GREY CHINÉ**

REPEAT:  $\longleftrightarrow$  19,95 cm

More Solids colours are available in the Bahia collection

# SOLIDS & STRIPES



SJA 3984 137  
**CANARY**

**NEW**



SJA 48009/00 137  
**ARBOR PEBBLE**



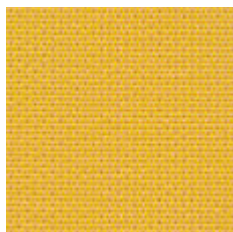
SJA 5476 137  
**HEATHER BEIGE**



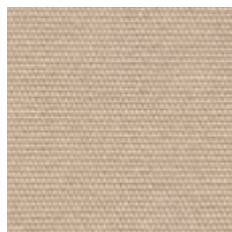
SJA 3756 137  
**LEAD CHINÉ**



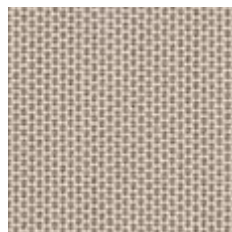
SJA 3757 137  
**FLANELLE**



SJA 3938 137  
**MIMOSA**



SJA 5422 137  
**ANTIQUÉ BEIGE**

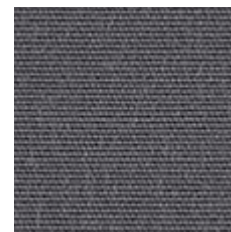


SJA 3988 137  
**STONE**

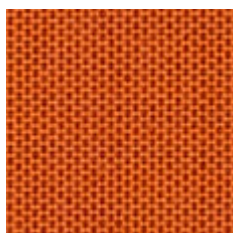
**NEW**



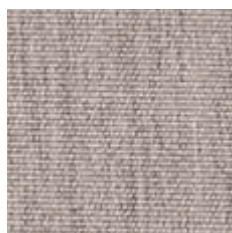
SJA 3706 137  
**SHINGLES**



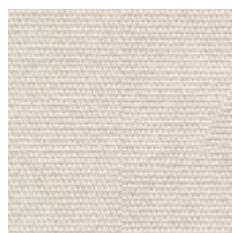
SJA 3737 137  
**ARDOISE**



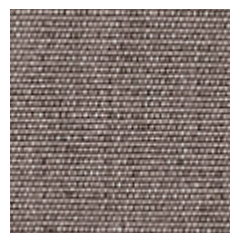
SJA 3969 137  
**PUMPKIN**



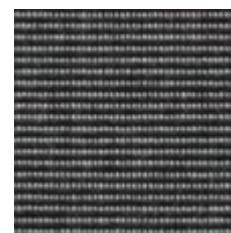
SJA 3780 137  
**LIN**



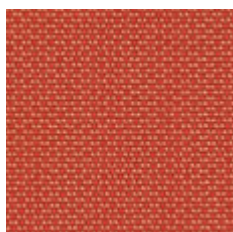
SJA 5453 137  
**CANVAS**



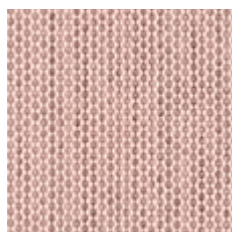
SJA 3907 137  
**TAUPE CHINÉ**



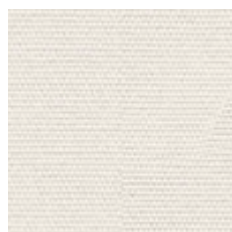
SJA 3705 137  
**CHARCOAL**



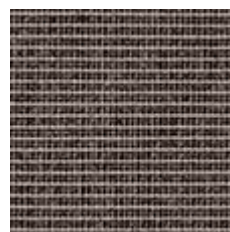
SJA 3939 137  
**PAPRIKA**



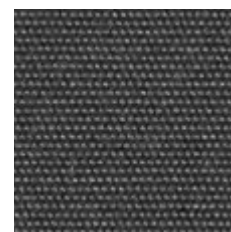
SJA 3965 137  
**BLUSH**



SJA 5404 137  
**NATURAL**



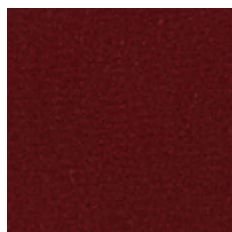
SJA 3792 137  
**DARK SMOKE**



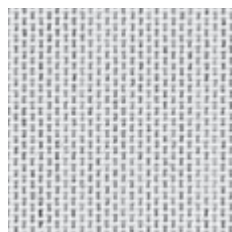
SJA 3906 137  
**CARBON**



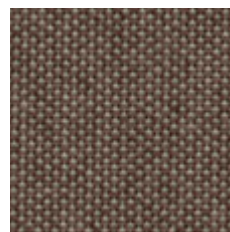
SJA 5477 137  
**LOGO RED**



SJA 5436 137  
**BURGUNDY**



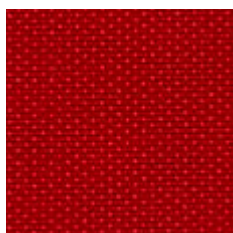
SJA 3966 137  
**MARBLE**



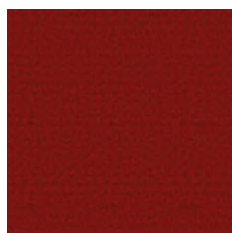
SJA 3127 137  
**MINK BROWN**



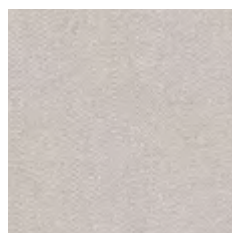
SJA 3758 137  
**SOOTY**



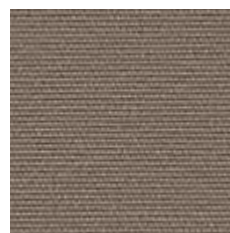
SJA 3968 137  
**PEPPER**



SJA 3728 137  
**PARIS RED**



SJA 3741 137  
**SILVER GREY**



SJA 3729 137  
**TAUPE**



SJA 5408 137  
**BLACK**

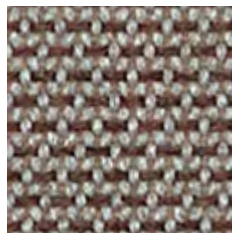


# ARCHI

NEW



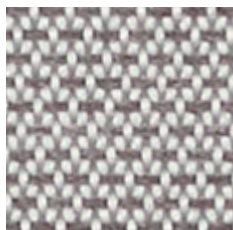
ARCH R051 140  
**FRAME**



ARCH R054 140  
**IPE**



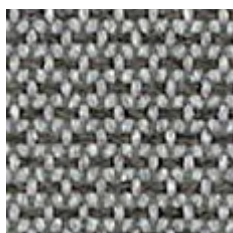
ARCH R055 140  
**OXIDE**



ARCH R052 140  
**CONCRETE**



ARCH R056 140  
**SLATE**

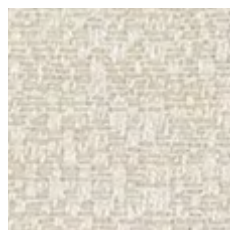


ARCH R053 140  
**LEAD**

# CHARTRES



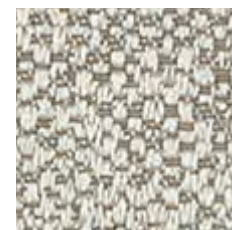
CHA2 J189 140  
**HEATHER**



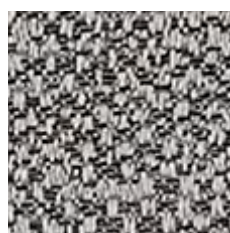
CHA2 J193 140  
**PEARL**



CHA2 J194 140  
**SILVER**



CHA2 J191 140  
**GREY**



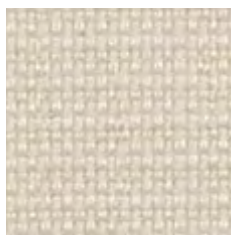
CHA2 J348 140  
**DRIZZLE**

NEW

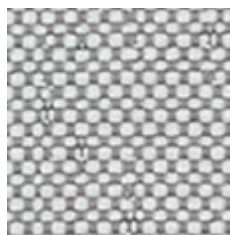


CHA2 J182 140  
**SOOTY**

# SAVANE



SAV2 J235 140  
**WHITE**



SAV2 J349 140  
**WHISPER** **NEW**



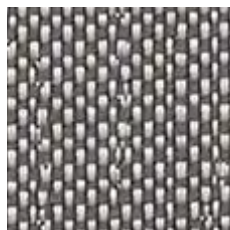
SAV2 J233 140  
**COCONUT**



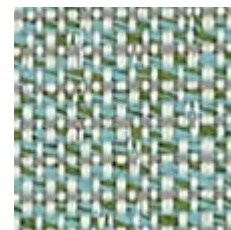
SAV2 J355 140  
**MIDNIGHT** **NEW**



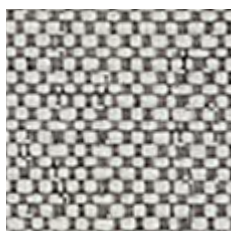
SAV2 J234 140  
**GREY**



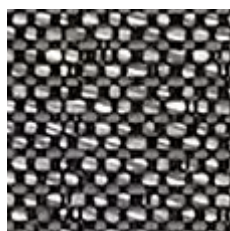
SAV2 J236 140  
**ZINC**



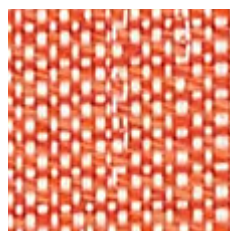
SAV2 J354 140  
**SPRING** **NEW**



SAV2 J350 140  
**NIMBUS** **NEW**



SAV2 J351 140  
**TORNADO** **NEW**



SAV2 J353 140  
**DAWN** **NEW**



SAV2 J352 140  
**ERIS** **NEW**

# RELAX

**NEW**



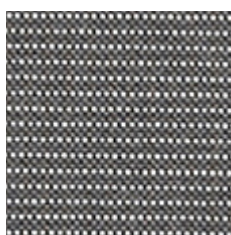
RLX B119 150  
**GRAPHITE**



RLX B100 150  
**CLOUD**



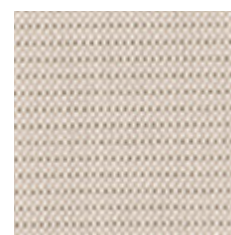
RLX B113 150  
**STORM**



RLX B118 150  
**STONE**



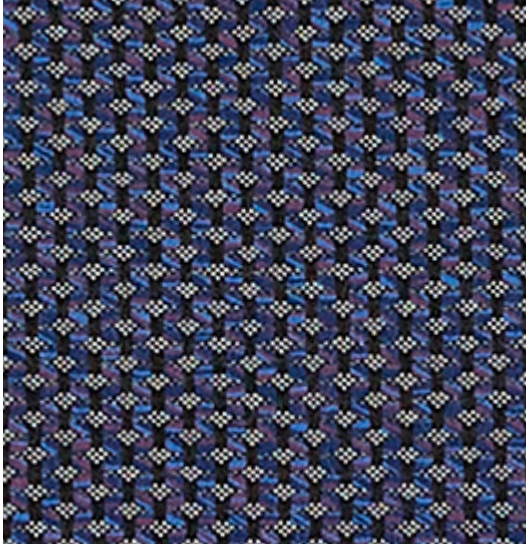
RLX B101 150  
**BIRCH**



RLX B102 150  
**SAND**

# MAJESTIC

NEW



MAJ J342 140  
**AMETHYST**



MAJ J338 140  
**CITRINE**



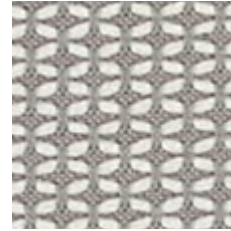
MAJ J339 140  
**QUARTZ**



MAJ J335 140  
**JAGER**



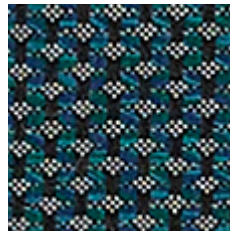
MAJ J340 140  
**PARAIBA**



MAJ J337 140  
**CRYSTAL**



MAJ J336 140  
**RIVER**



MAJ J341 140  
**NAOS**

# SLING



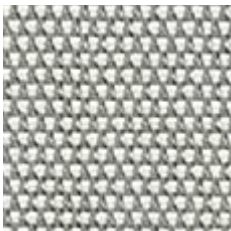
LOGAN



SAILING



AUGUSTINE



SLI 50143 10 137  
**SAILING SEAGULL**



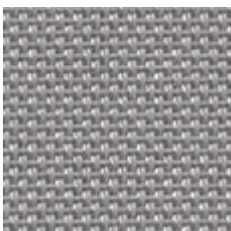
SLI 50045 18 137  
**LOGAN GRAPHITE**



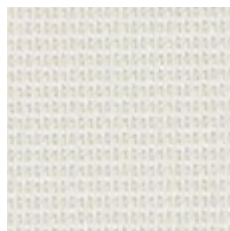
SLI 50045 06 137  
**LOGAN SAND**



SLI 50045 02 137  
**LOGAN TAUPE**



SLI 5928 44 137  
**AUGUSTINE SILVER**

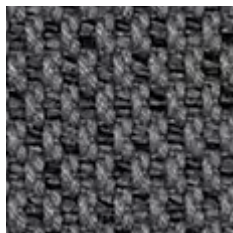


SLI 50045 07 137  
**LOGAN SNOWY**

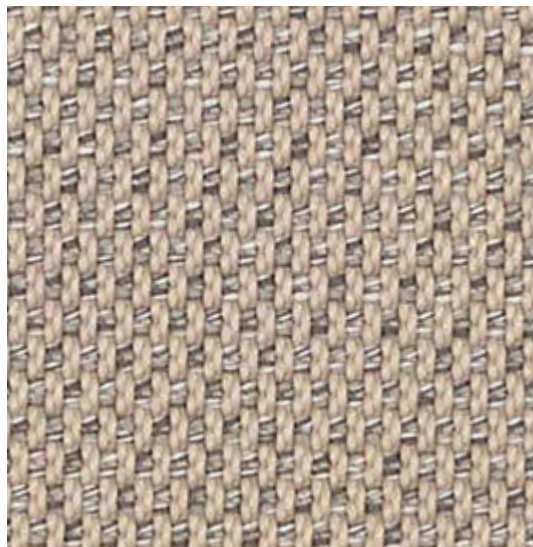


SLI 50143 19 137  
**SAILING SPACE**

# LOPI



LOP R013 140  
**SHADOW**



LOP R019 140  
**SAND**



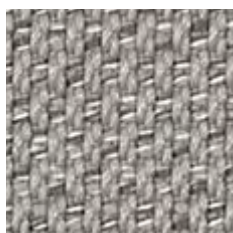
LOP R014 140  
**COCONUT**



LOP R017 140  
**CHARCOAL**



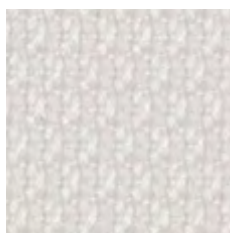
LOP R034 140  
**ANTIQUE**



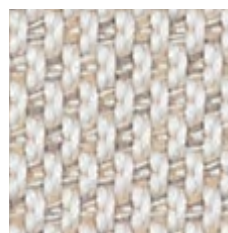
LOP R015 140  
**SILVER**



LOP R043 140  
**ASH** **NEW**



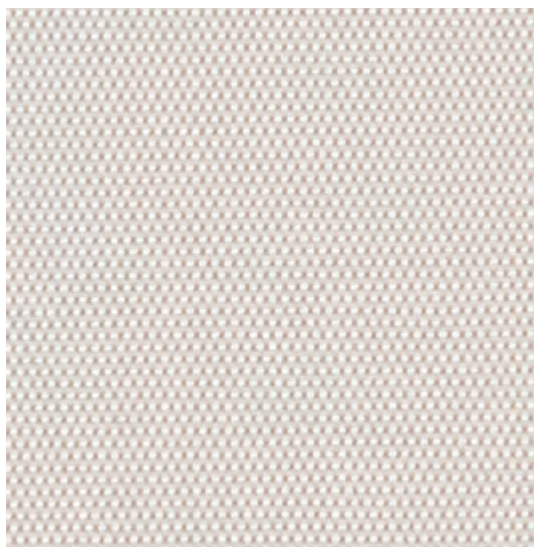
LOP R033 140  
**SNOW**



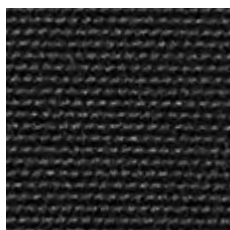
LOP R018 140  
**MARBLE**

More Lopi colours are available in the Bahia collection

# DEAUVE



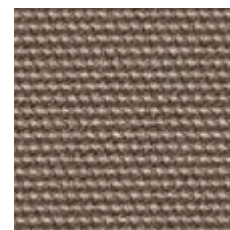
DEA 5453 140  
**CANVAS**



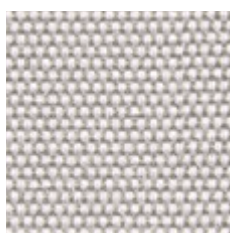
DEA 5032 140  
**BLACK**



DEA 3737 140  
**ARDOISE**



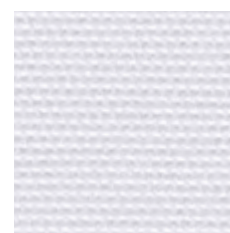
DEA 3729 140  
**TAUPE**



DEA 3741 140  
**SILVER GREY**

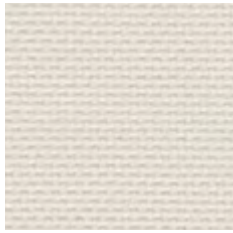


DEA 3977 140  
**CHALK**

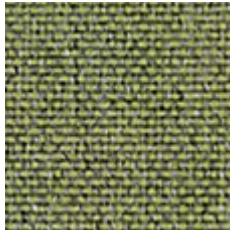


DEA 5404 140  
**WHITE**

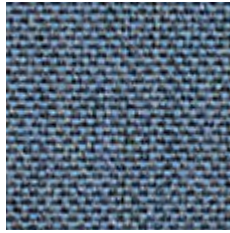
# NATTÉ



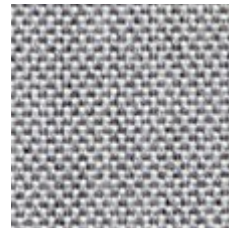
NAT 10020 140  
**WHITE**



NAT 10233 140 **NEW**  
**PISTACHIO**



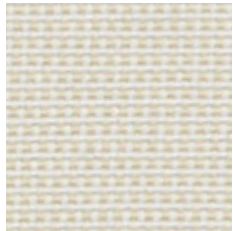
NAT 10064 140  
**CARBON SKY**



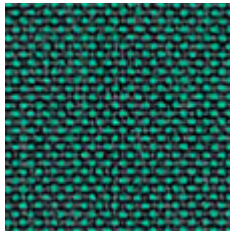
NAT 10022 140  
**GREY CHINÉ**



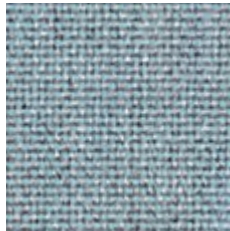
NAT 10151 140  
**LINEN CHALK**



NAT 10014 140  
**NATURE**



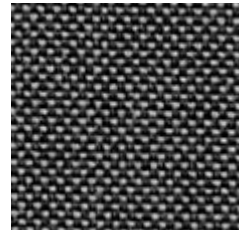
NAT 10232 140 **NEW**  
**IVY**



NAT 10025 140  
**FROSTY CHINÉ**



NAT 10155 140  
**TAUPE CHALK**



NAT 10059 140  
**DARK TAUPE**



NAT 10021 140  
**CANVAS**



NAT 10235 140 **NEW**  
**AMBER**



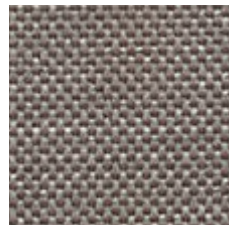
NAT 10065 140  
**CARBON BEIGE**



NAT 10063 140  
**CHARCOAL CHINÉ**



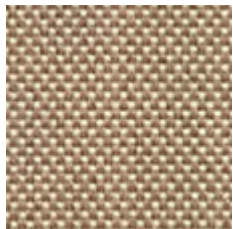
NAT 10150 140  
**HEATHER CHALK**



NAT 10040 140  
**NATURE GREY**



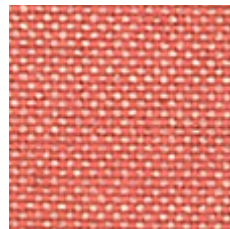
NAT 10030 140  
**SOOTY**



NAT 10028 140  
**HEATHER BEIGE**



NAT 10231 140 **NEW**  
**CARMINE**



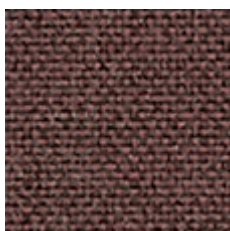
NAT 10234 140 **NEW**  
**FLAMINGO**



NAT 10152 140  
**GRAUMEL CHALK**



NAT 10029 140  
**HEATHER GREY**



NAT 10101 140 **NEW**  
**TONKA**

# KOMO

**NEW**

REPEAT:  
 ← 6 cm →    ↑ 7,1 cm ↓



KOM J345 140  
**TAWNY**



KOM J343 140  
**VETIVER**



KOM J346 140  
**COUA**



KOM J347 140  
**RAFFIA**



KOM J344 140  
**PEAT**

# HERITAGE RENAISSANCE



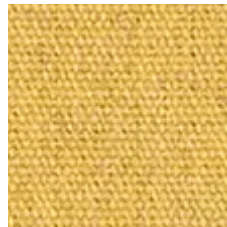
Due to the recycled nature of this fabric, the shade may vary from lot to lot and large slub yarns may run sporadically throughout the fabric. These slubs are not to be interpreted as imperfections, but as part of the character of the recycled fabric.



SJA 18011 00 137  
**LEAF**



SJA 18012 00 137  
**MOSS**



SJA 18023 00 137 **NEW**  
**DIJON**



SJA 18021 00 137 **NEW**  
**RUST**



SJA 18022 00 137 **NEW**  
**SCARLET**



SJA 18018 00 137 **NEW**  
**ALPINE**



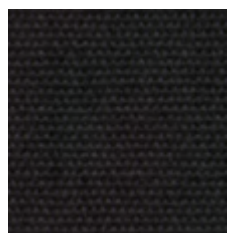
SJA 18015 00 137 **NEW**  
**SLATE**



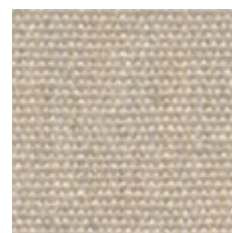
SJA 18001 00 137  
**ASH**



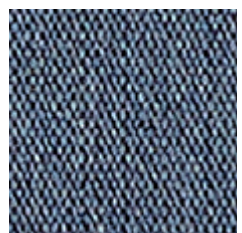
SJA 18017 00 137 **NEW**  
**INDIGO**



SJA 18009 00 137  
**CHAR**



SJA 18006 00 137  
**PAPYRUS**



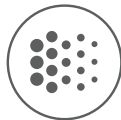
SJA 18016 00 137 **NEW**  
**SKY**

# DESIGN

but not only...



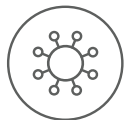
WATER & STAIN  
RESISTANT



UV/FADE  
RESISTANT



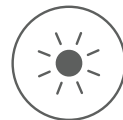
BLEACH  
CLEANABLE



MOLD/MILDEW  
RESISTANT



BREATHABLE  
COMFORT



SUN  
PROTECTION

[SUNBRELLA.COM](http://SUNBRELLA.COM)

# SUNBRELLA®

A BRAND THAT CARES  
ABOUT THE ENVIRONMENT

From production to use, Sunbrella® fabrics combine quality with durability to reduce their impact on the environment.



## LESS WASTE

Our quality Sunbrella® fabrics do not rot or fade and are highly resistant over time. As our fabrics do not need to be replaced as often as traditional fabrics, they generate less waste.



## LOW WATER CONSUMPTION

In the solution-dyeing process, colour pigments are added to the yarn as it is spun, to guarantee colourfastness and save water. The small amount of water used in our weaving process is fully recycled in-house.



## PRODUCT LIFECYCLE MANAGEMENT

As part of its Renaissance program, Sunbrella® created the Heritage Renaissance line containing up to 50% recycled solution-dyed acrylic fibres.

Recycled fibres are sourced directly from production plants where waste is divided into colour groups and turned back into fibres. These fibres are then blended with the "virgin" Sunbrella® fibres.

Learn more at  
[sunbrella.com/sustainability](https://sunbrella.com/sustainability)



# ENVIRONMENTAL CERTIFICATIONS



## REACH REGULATION

Sunbrella® has developed treatments designed and applied in strict compliance with European REACH regulations.

REACH is a European regulation designed to improve the protection of human health and the environment from the risks posed by chemicals, while enhancing the competitiveness of the EU chemicals industry.



## QSEE CERTIFICATION

(Quality-Safety-Environment-Energy)  
ISO 9001, ISO 14001, ISO 45001 and ISO 50001

As part of our continuous improvement approach, and to better meet the needs of customers, our company is certified to international standards by Bureau Veritas Certification. These standards guarantee the consistent quality of our products, protect the ecosystem, improve energy performance and enhance the efficiency of our QSEE system.



## GREENGUARD CERTIFIED

Sunbrella® upholstery fabric has achieved GREENGUARD GOLD Certification. Sunbrella® upholstery fabrics are certified by GREENGUARD as contributing to healthy indoor air by being a very low emitting interior product.



## OEKO-TEX LABEL

A quality that meets human-ecological requirements. Awarded with the OEKO-TEX label (class II - products with direct contact to the skin), Sunbrella® fabrics are produced without hazardous substances and do not pose a threat to health, the skin or the environment.




## ZERO LANDFILL

For over 30 years, Sunbrella® has recycled its industrial wastes such as yarn and packaging. Today, every Sunbrella® manufacturing facility around the globe sends absolutely no waste to the landfill.



## 5 YEAR WARRANTY

Sunbrella® acrylic guarantees outstanding colourfastness.

	STANDARDS NORMES	ARCHI	CHARTRES	DEAUVE	HERITAGE	KOMO	LOPI	MAJESTIC	NATTÉ	RELAX	SAVANE	SLING AUGUSTINE	SLING LOGAN	SLING SAILING	SOLIDS & STRIPES
COMPOSITION	-	99% Sunbrella® Acrylic 1% Polyester	100% Sunbrella® Acrylic	100% Sunbrella® Acrylic	50% recycled Sunbrella® Acrylic 47% Sunbrella® Acrylic 3% Polyester	100% Sunbrella® Acrylic	100% Sunbrella® Acrylic	100% Sunbrella® Acrylic	100% Sunbrella® Acrylic	100% Sunbrella® Acrylic	100% Sunbrella® Acrylic	11% Sunbrella® Acrylic 25% Polyester 64% PVC	19% Sunbrella® Acrylic 22% Polyester 59% PVC	35% Sunbrella® Acrylic 17.8% Polyester 47.2% PVC	100% Sunbrella® Acrylic
FINISH FINITION	-	Water-Repellent & Stain-Proof Déperlant & Anti-Taches													
MINIMUM USEFULL WIDTH LAIZE UTILE MINI/CM	EN 1773	140	140	140	137	140	140	140	140	150	140	137	137	137	137
WEIGHT POIDS	ISO 3801 g/sqm - g/m²	585	375	335	335	603	680	410	275	208	400	505	480	580	260
ROLL LENGTH LONGUEUR ROULEAU	LM ML	25	45	50	55	25	25	40	50	60	40	40	40	40	50
SPRAY TEST DÉPERLANCE	ISO 4920 Class / 5	5	5	5	5	4	4-5	5	5	4-5	5	-	-	-	5
COLOUR FASTNESS UV INDOOR SOLIDITÉ COULEURS UV INDOOR	ISO 105B02 Class / 8	8													
COLOUR FASTNESS TO WEATHER OUTDOOR SOLIDITÉ COLORIS INTEMPÉRIES OUTDOOR	ISO 105B04 - 1000 H Class / 5	4-5													
WASH COLOUR FASTNESS 30°C SOLIDITÉ COLORIS LAVAGE 30°C	ISO 105C06 Class / 5	5													
COLOUR FASTNESS DRY FRICTION SOLIDITÉ COLORIS FROTTEMENT SEC	ISO 105X12 Class / 5	5													
COLOUR FASTNESS WET FRICTION SOLIDITÉ COLORIS FROTTEMENT HUMIDE	ISO 105X12 Class / 5	5													
CARE INSTRUCTIONS ENTRETIEN															
		Ironing reinforces the treatment - Le repassage renforce le traitement													

\*Sling : Do not iron - repassage interdit



**DESIGN + PERFORMANCE™**

**SUNBRELLA.COM**

EDITION SEPTEMBER 2020 - SAS DICKSON CONSTANT - CAPITAL 12.640.000 EUROS - 381 347 970 R.C.S. LILLE MÉTROPOLE  
PHOTOS : EDOUARD AUFRAY - SUNBRELLA DESIGN + PERFORMANCE™ IS A TRADEMARK AND SUNBRELLA® IS A REGISTERED TRADEMARK OF GLEN RAVEN, INC.

